



Morgans

PROPERTY

77 Lorimer Gardens, Dunfermline, KY12 0BF

Offers Over £87,500







****CLOSING DATE TUESDAY 14 MAY 2024 @ 12 NOON** - 50% EQUITY SHARE WITH KINGDOM HOUSING.** This three bedroom semi detached villa situated in popular residential estate with all amenities closeby. An ideal family home with early entry available. The subjects briefly comprise entrance vestibule, lounge, dining kitchen, separate utility room and w.c facilities. On the upper level there are three bedrooms and bathroom with overhead electric shower. Great views from the upper level over the town towards the Forth Bridges. Gardens to front and rear. The rear gardens are enclosed providing a child and pet safe environment. The property is double glazed with gas central heating.





LOCATION

The ancient capital of Dunfermline won its bid to have official city status in May 2022, as part of the civic honour's competition to celebrate the Queen's platinum jubilee. The City of Dunfermline is of considerable historic interest and is the resting place of King Robert the Bruce. Carnegie's Birthplace museum, the Abbey and Abbot House reflect the historic interest of the city, whilst recent developments have seen Dunfermline move into the modern era with Carnegie Museum and Library. Dunfermline is located approximately five miles from the Forth bridges and is therefore particularly popular with commuters to Edinburgh and many parts of the central belt with easy access to the M90 motorway with its direct links to Edinburgh, Perth and Dundee and across the Kincardine Bridge by way of motorways to Stirling, Glasgow and the West. It benefits from a full range of shops, social and leisure facilities and educational establishments. The local railway stations provide a regular service to Edinburgh with intercity links to other parts of the UK. There are regular and convenient bus services both local and national.

EXTRAS INC. IN SALE /AGENTS NOTE

All floor coverings, blinds, bathroom and light fittings together with integrated appliances and garden shed.

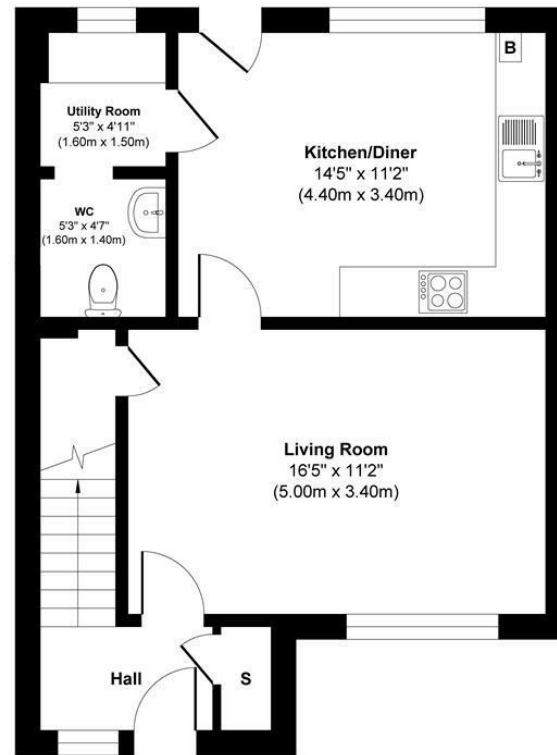
This property is being sold in its present condition and no warranty will be given to any purchaser with regard to the existence or condition of the services or any heating or other system within the property or white goods. Any intending purchaser will require to accept the position as it exists. From 1st February 2022, residential properties in Scotland are required by law to have installed a system of inter-linked smoke alarms, carbon monoxide detectors and heat detectors (the "inter-linked system"). No warranty is given to the interlinked system installed in this property.



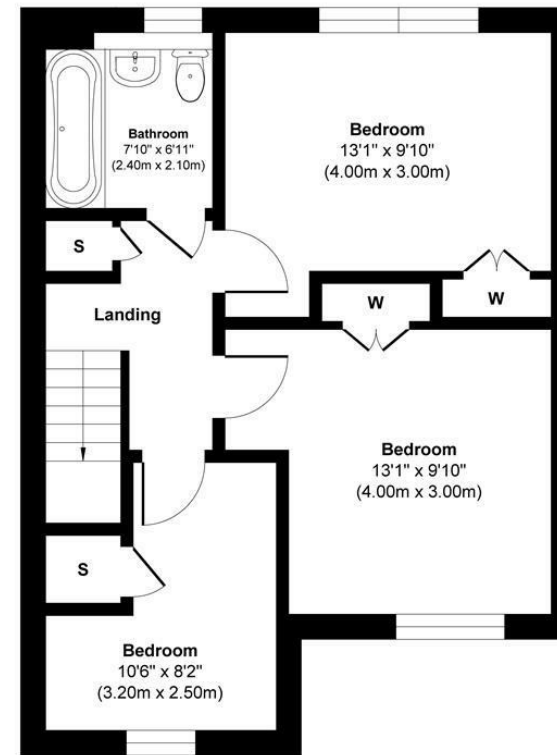








Ground Floor



First Floor



This floor plan is for illustrative and marketing purposes only and is to be used as a guide only. No details are guaranteed on measurements, floor areas, or orientation and do not form any agreement. No liability is taken for error, omission or misstatement. A party must rely upon its own inspection(s). Created by 9AM Media



SOLICITORS | PROPERTY

33 East Port, Dunfermline, Fife, KY12 7JE

Tel: 01383 620222 Fax: 01383 621213

www.morganlaw.co.uk



rightmove

Zoopla.co.uk

onTheMarket.com

naei | propertymark

s1homes.com

PROTECTED

AGENTS NOTE These particulars do not form part of any contract and the statements or plans contained herein are not warranted nor to scale. Approximate measurements have been taken by electronic device at the widest point. Services and appliances have not been tested for efficiency or safety and no warranty is given as to their compliance with any Regulations. No movable items will be included in the sale.